

SciencesPo

# ADMISSIONS REPORT

# 2019





# TABLE OF CONTENTS

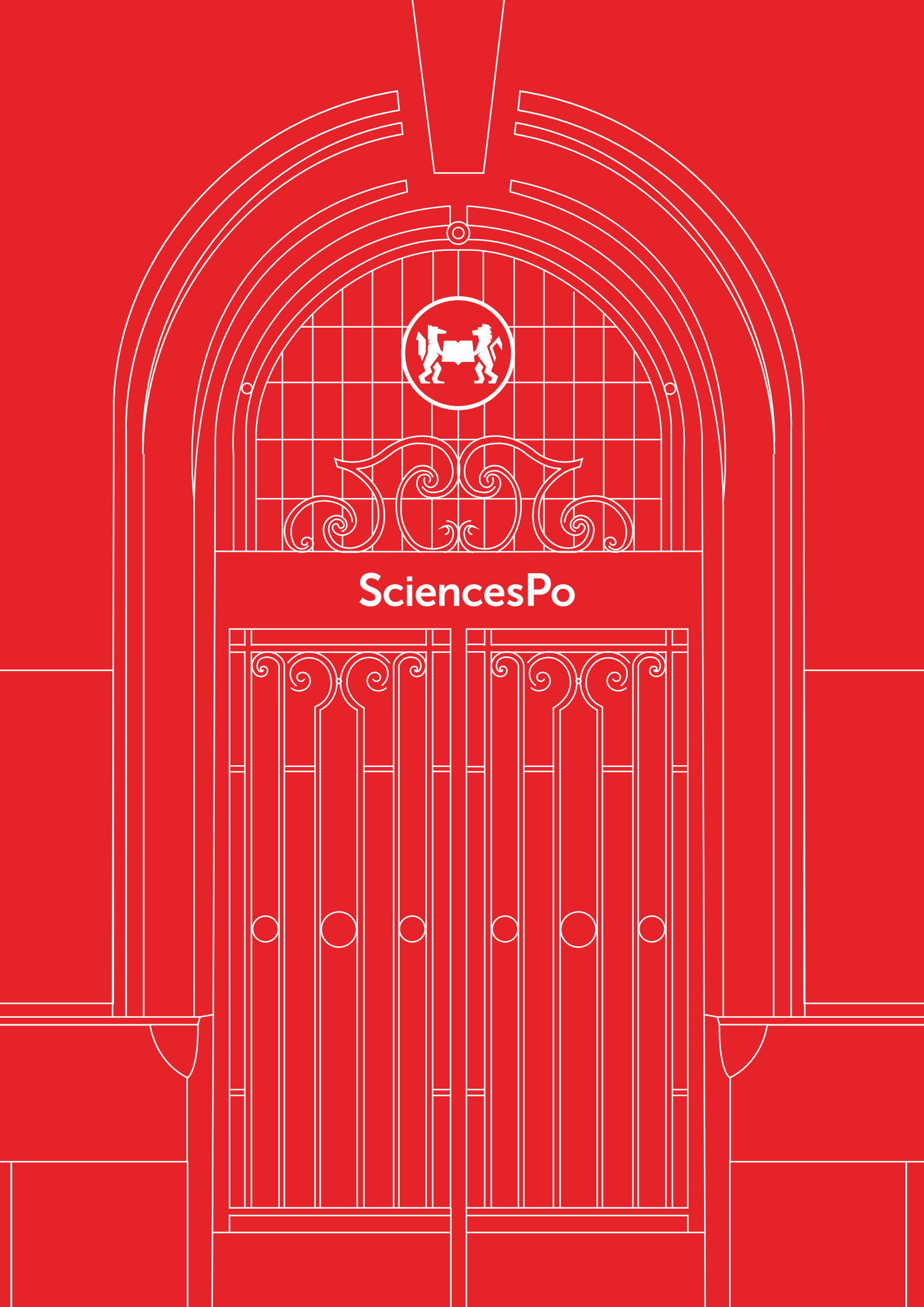
Introduction .....	page 5
--------------------	--------

## **1 A GENERAL INCREASE IN APPEAL**

<b>1</b> A record high of applications in 2019 .....	page 7
<b>2</b> Undergraduate College: applicants and admitted students since 2009 .....	page 8
<b>3</b> Graduate Schools: applicants and admitted students since 2009 .....	page 12

## **2 A DIVERSE POOL OF CANDIDATES AND ADMITTED STUDENTS**

<b>1</b> Candidates from across the globe .....	page 17
<b>2</b> An Equal Opportunity Programme combined with a policy of social inclusion .....	page 18
<b>3</b> Greater inclusion of students with disabilities .....	page 20



**SciencesPo**

# INTRODUCTION

**S**ciences Po's admission policy unites selectivity and inclusivity to give the most talented and deserving students of every social, cultural, or geographic background the chance to study at our university.

Our 2019 Admissions Report reaffirms Sciences Po's attractiveness as an institution, recording, for the second year running, over 20,000 applications (20,809 compared to 20,621 in 2018) for the Undergraduate College and Master's programmes this year. An increase in both selectivity (with the overall acceptance rate shifting from 21% in 2018 to 20% in 2019) and diversity among candidates is a stamp of the excellence of the university's course offering.

Applicants (across all admissions procedures) came from 137 different countries and almost 2,600 high schools around the world. 4,218 new students, from undergraduate to doctorate level, joined Sciences Po in September 2019 on one of its seven campuses across France. Bachelor's students started at the Undergraduate College, our interdisciplinary BA programme grounded in the social sciences. Our seven professional Graduate Schools welcomed students at master's level, as well as young professionals beginning training on a one-year master's programme. Last but not least, our community was enriched by the admission of new PhD students.

Sciences Po's multifaceted, multidisciplinary teaching is the university's greatest strength and each year it attracts a still greater number of applicants.

**Each year, the Admissions Report provides a breakdown of Sciences Po's applicants and admitted students and a confirmation that selectivity and student diversity are by no means incompatible.**



# 1

**A GENERAL INCREASE  
IN APPEAL**

# 1 A RECORD HIGH OF APPLICATIONS IN 2019

These figures concern undergraduate and graduate students, including students in dual-degree programmes at both levels.

## 4,218

Students admitted

## 20,809

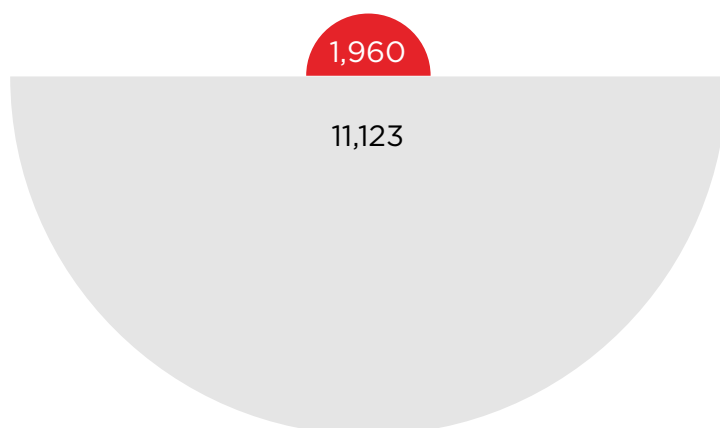
Candidates

## 20%

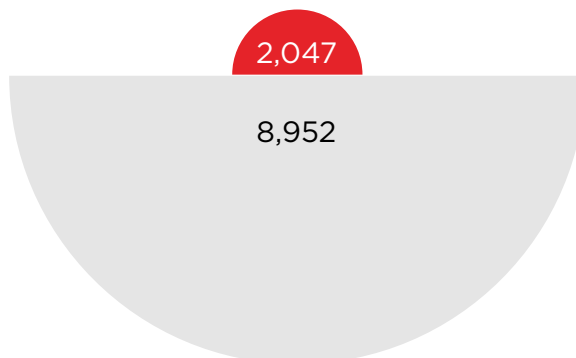
acceptance rate

● Candidates ● Admitted

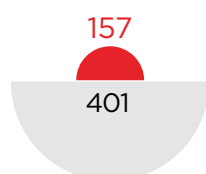
### Undergraduate College



### Master's



### One-Year Master's



### Doctorate

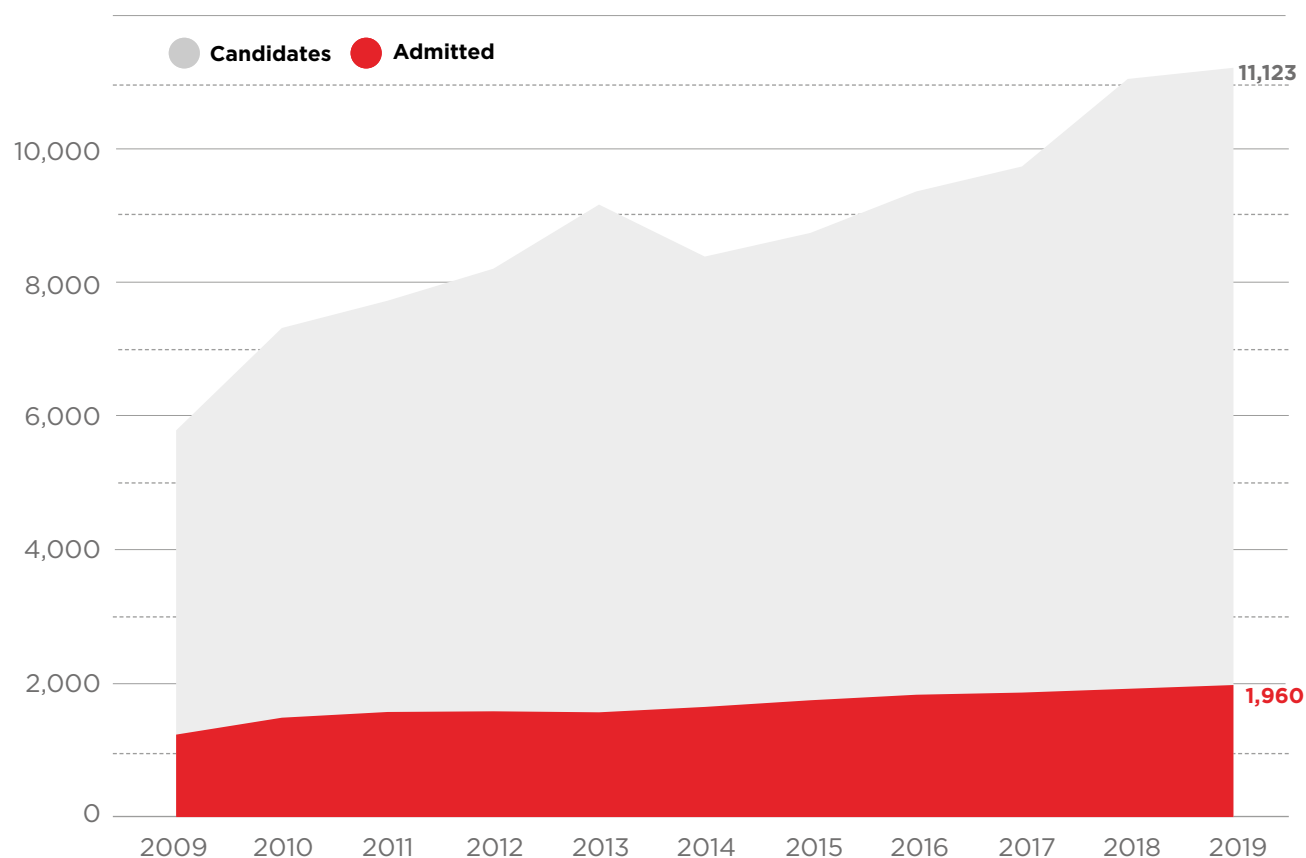


## 2 UNDERGRADUATE COLLEGE: APPLICANTS AND ADMITTED STUDENTS SINCE 2009

Since 2009 we have maintained a rate of admission that fulfils the institution's wish to preserve the selectivity of entry. The acceptance rate went from 17% to 18% between 2018 and 2019.

Evolution of number of candidates and admitted students\*

FROM 2009-2019



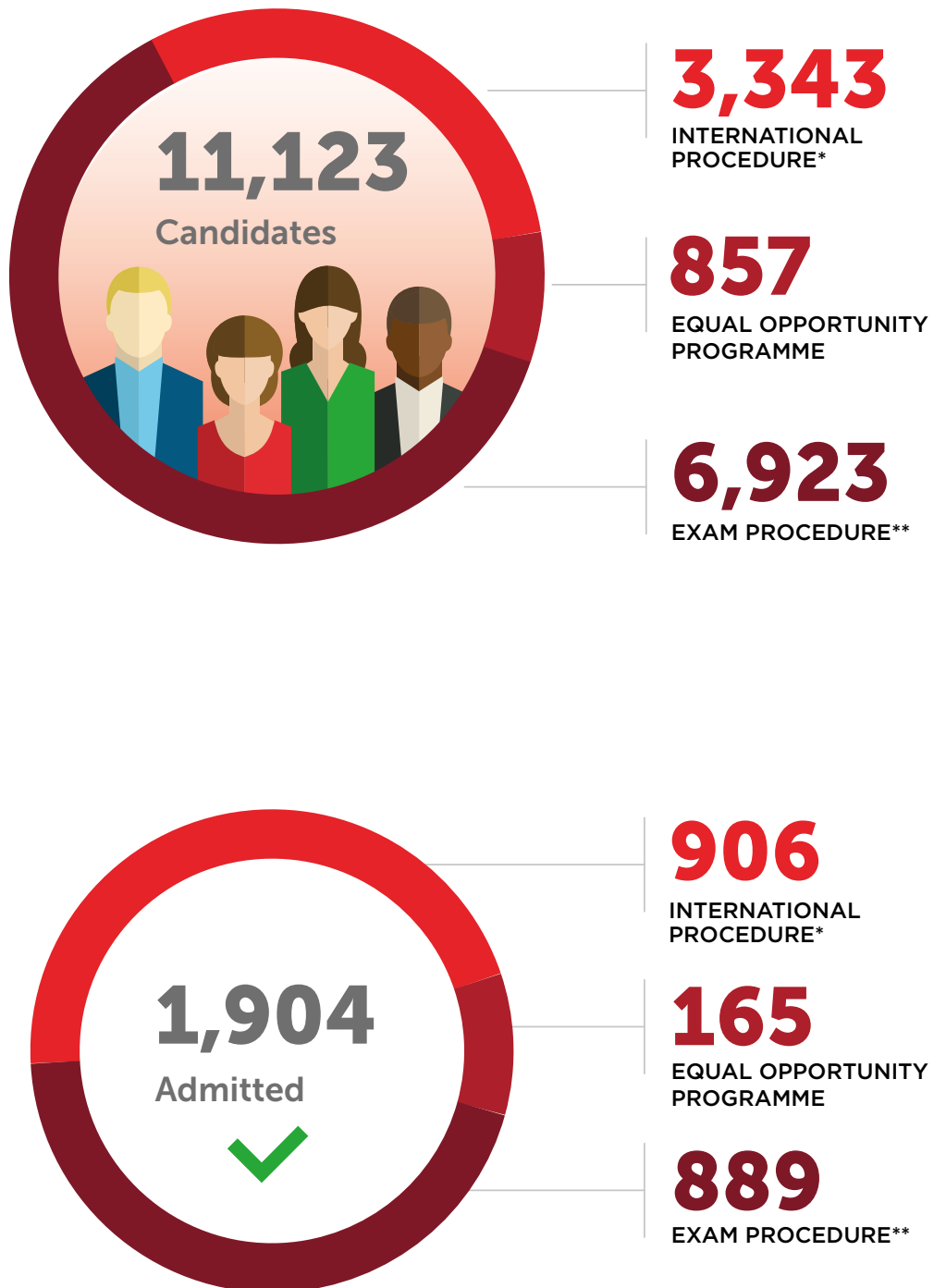
**The number of applications for the Undergraduate College doubled between 2009 and 2019.**

\* The figures from 2018 include applicants for dual-degrees with Parisian universities



## Candidates and Admitted Students

**IN 2019**



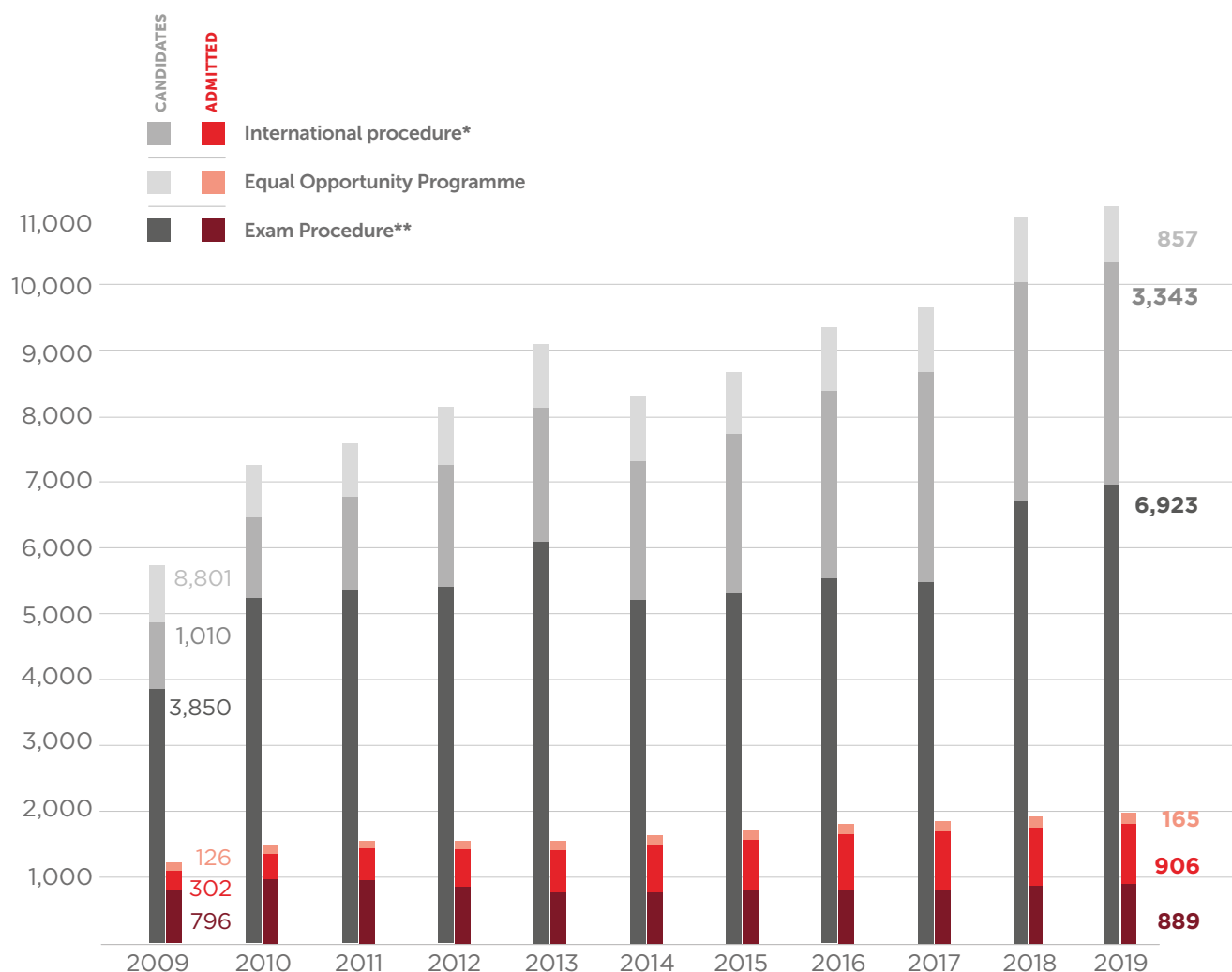
\* International procedure and international degrees

\*\* Exam procedure and dual-degrees with Parisian universities

## Evolution of number of candidates and admitted students

### BY PROCEDURE

Since 2010, more than 5,000 high school students took the Sciences Po entrance exams each year.



\* International procedure and international dual-degrees

\*\* Exam procedure and dual-degrees with Parisian universities

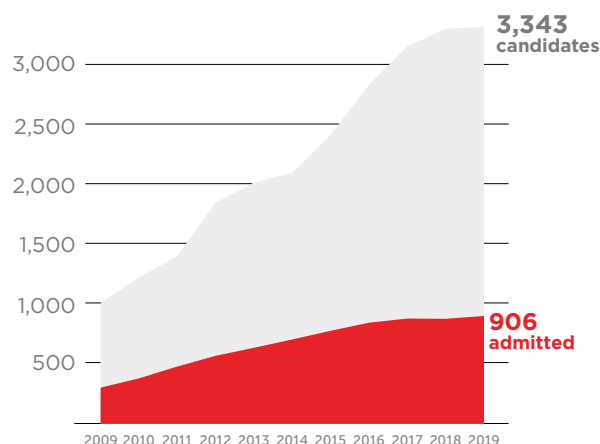
# 3x more

international applicants since 2009.

# 46%

of students admitted in 2019 applied via the international admissions procedure or an international dual degree programme.

**International procedure and international dual-degrees**



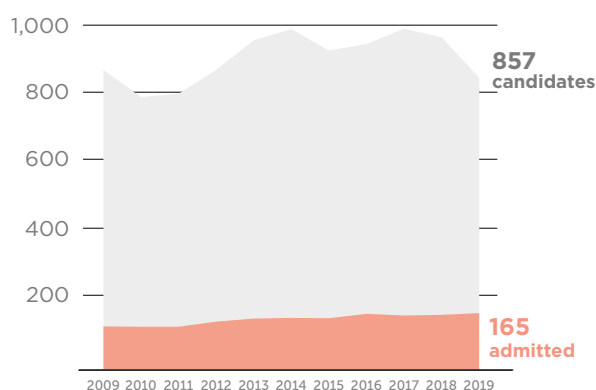
# 857

students qualified for the Equal Opportunity Programme.

# 478

sat the Oral Admissions Exam.

**Equal Opportunity Programme**



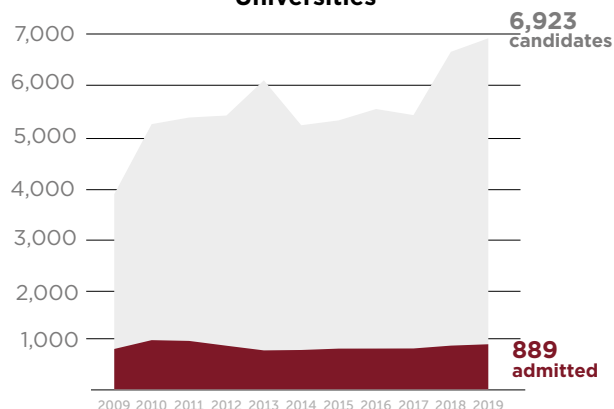
# 13%

acceptance rate for students who applied via the exam procedure.

# 45%

of all students admitted applied via the examination procedure or via one of the dual degrees with French universities.

**Exam procedure and dual degree with French Universities**

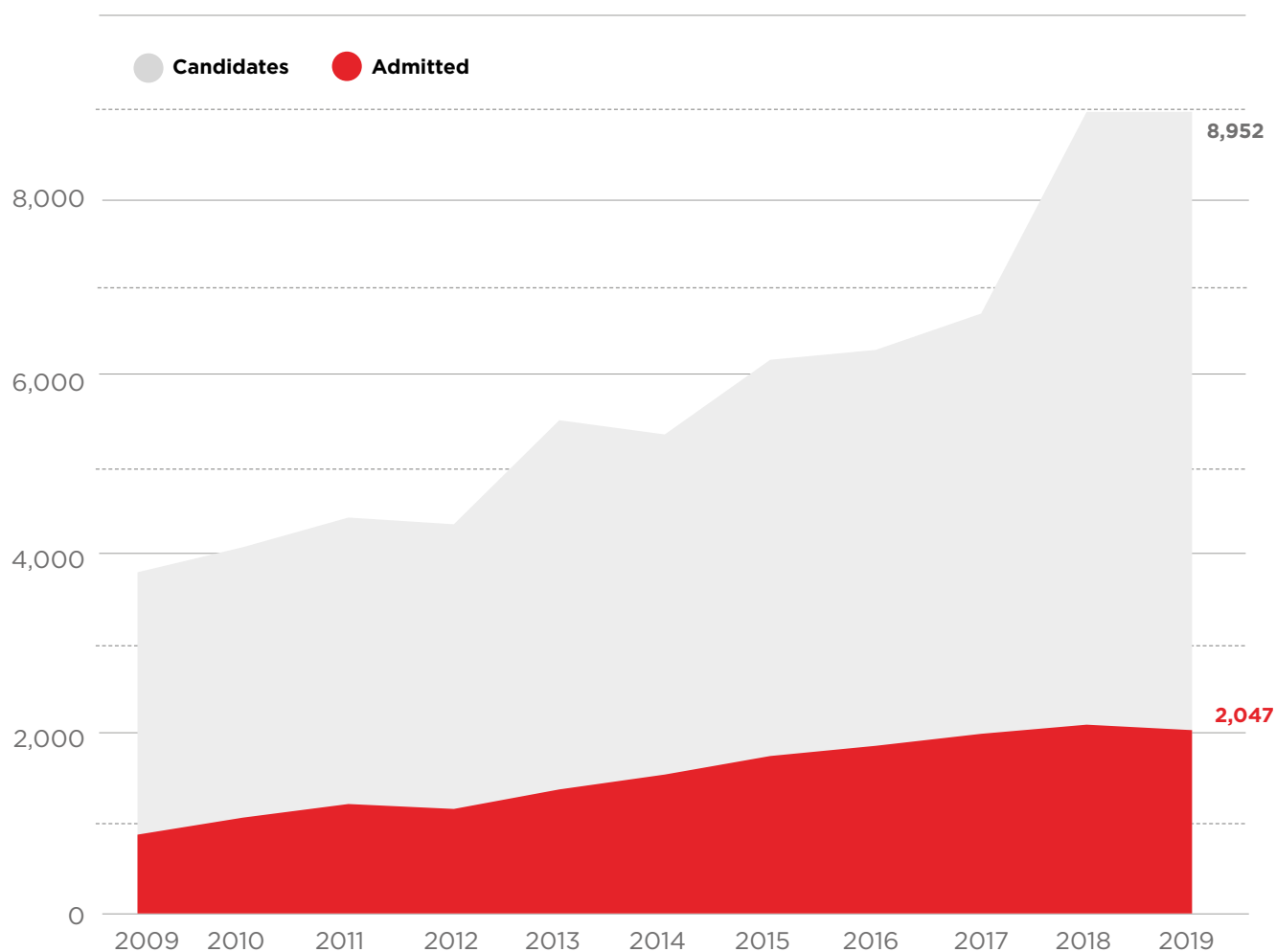


# 3

## GRADUATE SCHOOLS: APPLICANTS AND ADMITTED STUDENTS SINCE 2009

Evolution of number of candidates and admitted students\*

FROM 2009 TO 2019



The number of applications at graduate level has multiplied by 2.3 between 2009 and 2019.

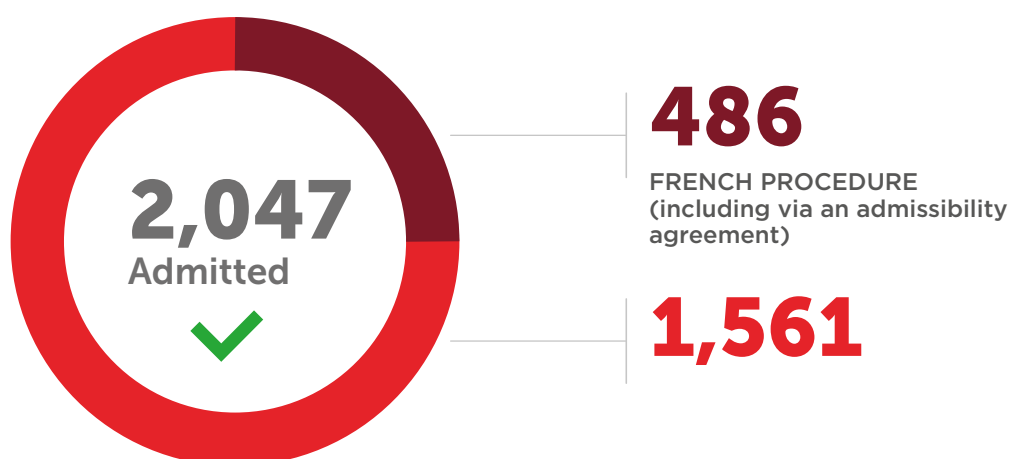
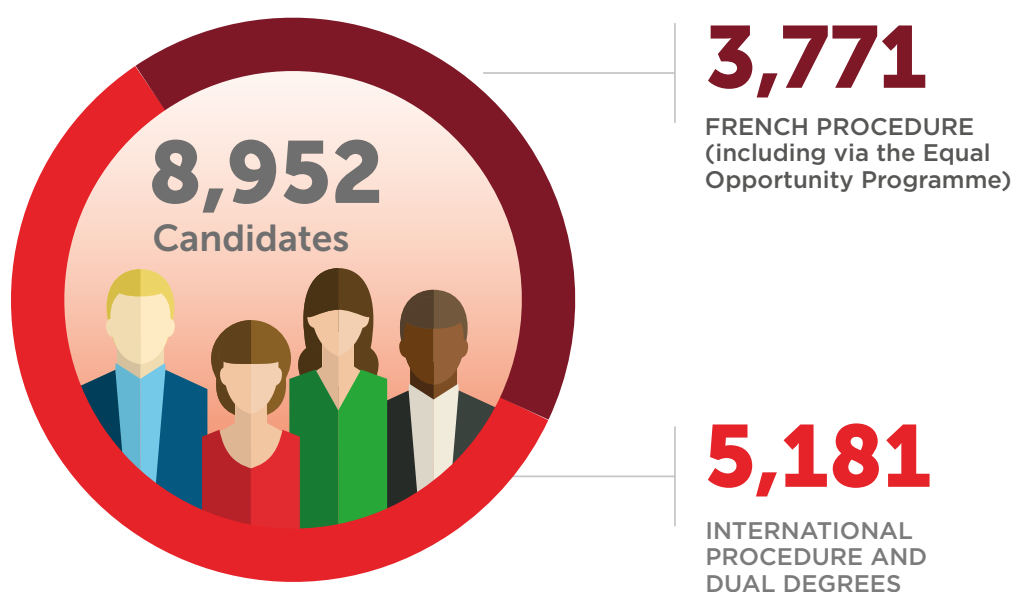
**23%**

acceptance rate in 2019  
(compared to 24% in 2018).

\* It is possible to apply either to a standard master's programme and a dual-degree at the same time, or a standard master's alone.

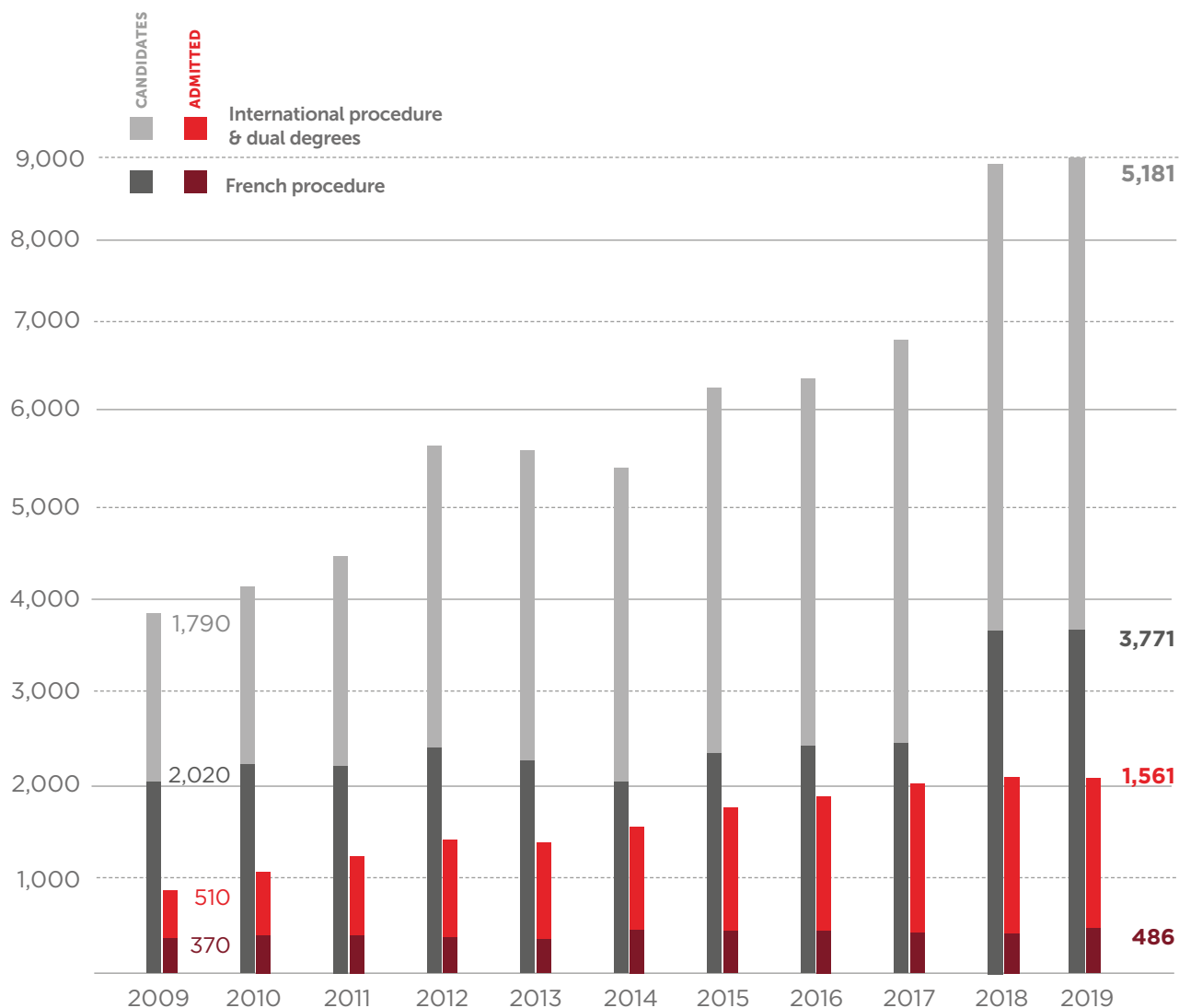
## Candidates and Admitted Students

IN 2019



## Evolution of number of candidates and admitted students

### BY PROCEDURE



### ONE-YEAR MASTER'S

Our One-Year Master's programmes, launched in 2015, are intensive courses designed for recent graduates who wish to develop quickly the expertise they need in order to accelerate their careers. The programmes are taught entirely in English at the Paris School of International Affairs, the School of Public Affairs, the School of Management and Innovation, and the Law School.

Candidates for the One-Year Master's programmes must be able to demonstrate both academic ability and substantial professional experience.

#### IN 2019

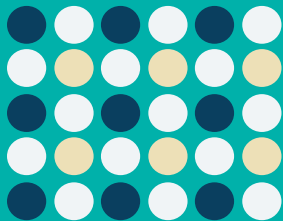
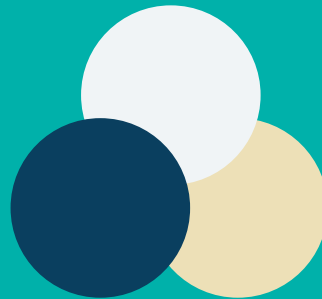
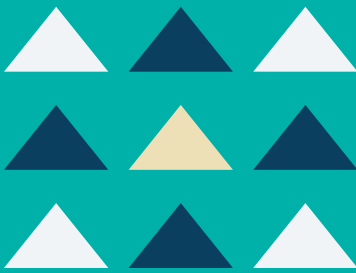
**331**  
candidates  
**157**  
admitted



# 2



**A DIVERSE POOL  
OF CANDIDATES AND  
ADMITTED STUDENTS**







# **1 CANDIDATES FROM ACROSS THE GLOBE**

## **UNDERGRADUATE COLLEGE**

---



Undergraduate candidates who applied via the international procedure came from 137 different countries.

## **GRADUATE SCHOOLS**

---



Graduate School applicants came from 121 different countries.




### **Top 10 feeder countries for master's students**

---

-  1. United States
-  2. Germany
-  3. China
-  4. Italy
-  5. India
-  6. United Kingdom
-  7. Canada
-  8. Spain
-  9. Netherlands
-  10. Mexico

### **Top 3 institutions of origin of our master's students**

---

-  1. Mc Gill University
-  2. King's College London
-  3. University College London

2

## AN EQUAL OPPORTUNITY PROGRAMME COMBINED WITH A POLICY OF SOCIAL INCLUSION FOR GREATER DIVERSITY

### ADMISSIONS PROCESS FOR THE EQUAL OPPORTUNITY PROGRAMME

**2,094**

**students** have been admitted through the Equal Opportunity Programme since it began in 2001, positioning Sciences Po as a key actor in social diversity among other institutions of higher education.

Over 18 years, the  
Equal Opportunity  
Programme has  
involved:

**+13,000**

high school students

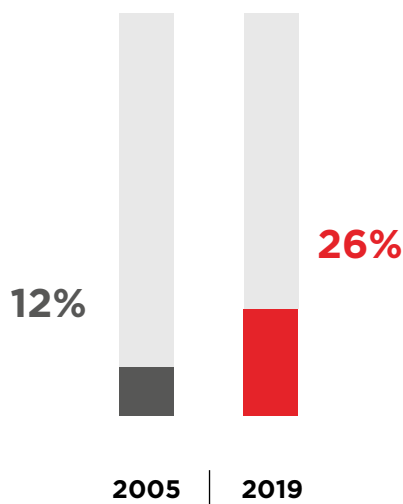
**106**

partner high schools

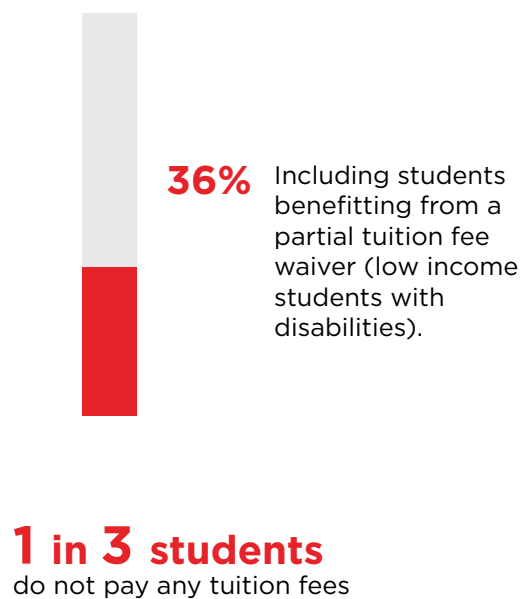


## A socially inclusive university

Percentage of students receiving CROUS scholarships:



percentage of Sciences Po students receiving financial aid in 2019:



# €11.1M

of Sciences Po's funds are put towards:

**A 75% top-up grant for students who receive CROUS scholarships**

**Boutmy merit-based scholarships**

**Financial aid for studying abroad**

**Other financial aid and services:**  
housing support, emergency social assistance, residence permits, etc.

The Equal Opportunity Programme, our means-tested tuition initiative, together with our proactive policy of financial and social support all help promote greater diversity within the university.

## **3** GREATER INCLUSION OF STUDENTS WITH DISABILITIES

**316**

**students with disabilities**  
at Sciences Po  
in 2019



**12x more**

**than in September 2007**

---

### **UNDERGRADUATE COLLEGE**

Number of candidates with a disability entitled to special arrangements when they apply.





## Sciences Po

27 rue Saint Guillaume  
75007 Paris – France  
[www.sciencespo.fr](http://www.sciencespo.fr)



[facebook.com/sciencespo](https://facebook.com/sciencespo)



[twitter.com/sciencespo](https://twitter.com/sciencespo)



[linkedin.com/edu/sciences-po-12454](https://linkedin.com/edu/sciences-po-12454)



[youtube.com/sciencespo](https://youtube.com/sciencespo)



[instagram.com/sciencespo](https://instagram.com/sciencespo)



Follow Sciences Po on Snapchat